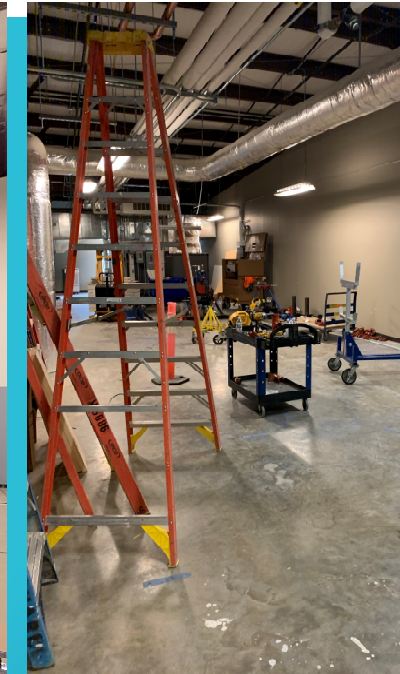


Student Center Project

Construction Update



Renovation –
The beams in the gym are gone and the storage room is framed



Mechanical Rough-In has started in the mechanical room



Building Slab is ready to pour concrete

Current Activities:

- Building slab vapor barrier and rebar installed
- Mechanical Electrical and Plumbing (MEP) Building Tie-Ins Continue
- Slab on Grade Pours this week (If the weather allows)
- Gym & Student Common space build back started

Upcoming Activities:

- MEP to complete tie-in work to existing systems
- Structure to be delivered and start
- Building Steel erection to start
- Gym & Student Common space build back continues